



Introduction to Drawing

SOL's 6.2, 6.12

All artists use sketches...



To start: Pencil Modeling Techniques

- **Gesture Sketch:** a quick drawing that captures the gestures and movements of the object.

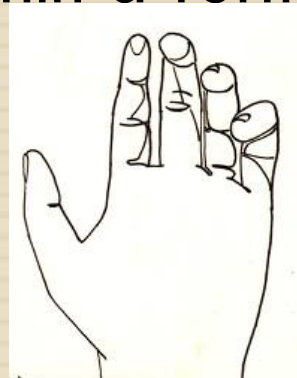


- **Straight Lines**

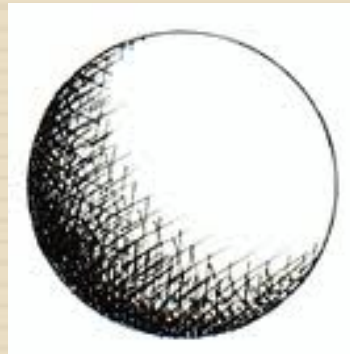


Pencil Modeling Techniques, cont.

- **Contour Lines:** lines that define the outer edges of forms and surfaces within a form, such as shapes or wrinkles and folds.



- **Cross-Hatching:** shading created by crossed parallel lines.

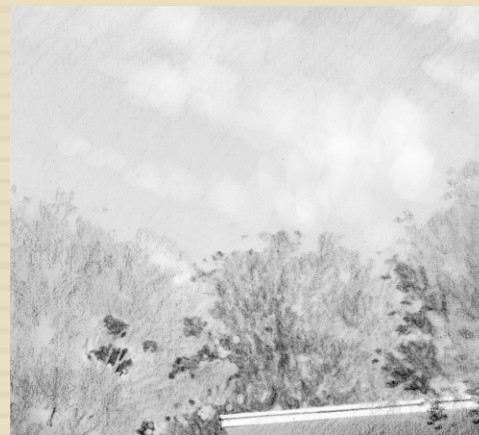


Pencil Modeling Techniques, cont.

- Stipples or dots: uses patterns of dots to create values and value gradation.



- Side of the Pencil and Side of the Pencil: blended with eraser highlights

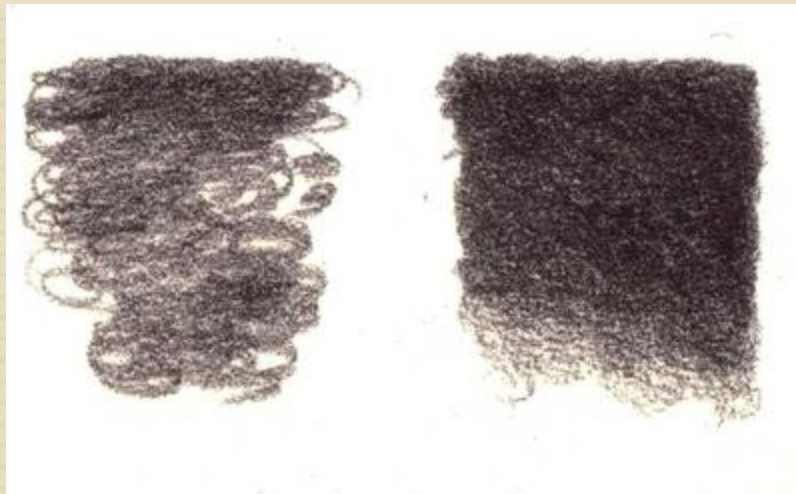


Pencil Modeling Techniques, cont.

- Back and Forth Marks: which gradually build up darker.

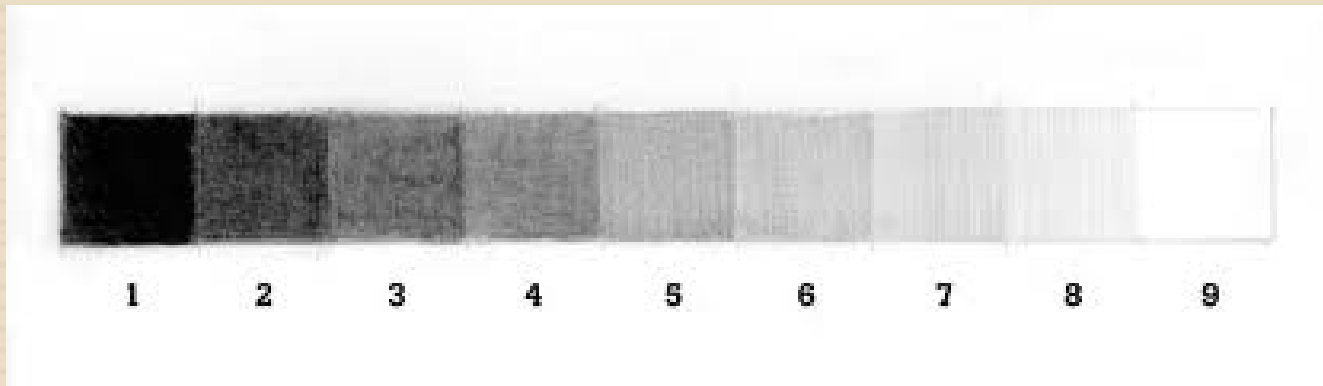


- Round Scribbles



You've got to have value...

- What is value?
 - Value is the range of light to dark in an artwork.
- What is a value scale?
 - It the range from white to grey, to black gradually.
 - Here's an example:



Let me tell you about Perspective...

- Perspective is The representation of three-dimensional objects on a flat surface to produce the same impression of distance and relative size as that received by the human eye.
 - There are two types:
 - Linear: A technique of creating the illusion of depth on a flat surface.
 - Atmospheric or Aerial: The diminishing of color intensity to lighter and duller hues to give the illusion of distance.

Some examples of perspective...

➤ Linear



➤ Atmospheric or Aerial

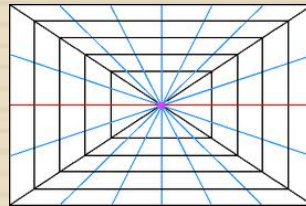


Perspective Terms and Illustrations

- **Horizon Line:** The line at which sky and earth meet.



- **Vanishing Point:** In linear perspective, the point on the horizon line at which all receding parallel lines converge.



- **Orthogonal Lines:** Lines imagined to be behind and perpendicular to the picture plane. The orthogonal lines in a picture appear to recede toward a vanishing point on the horizon line.

To give you more ideas about perspective, let's watch this video...

- <http://smarthistory.khanacademy.org/Brunelleschi.html>
- After watching the video complete your K-W-L you started at the beginning of class.